

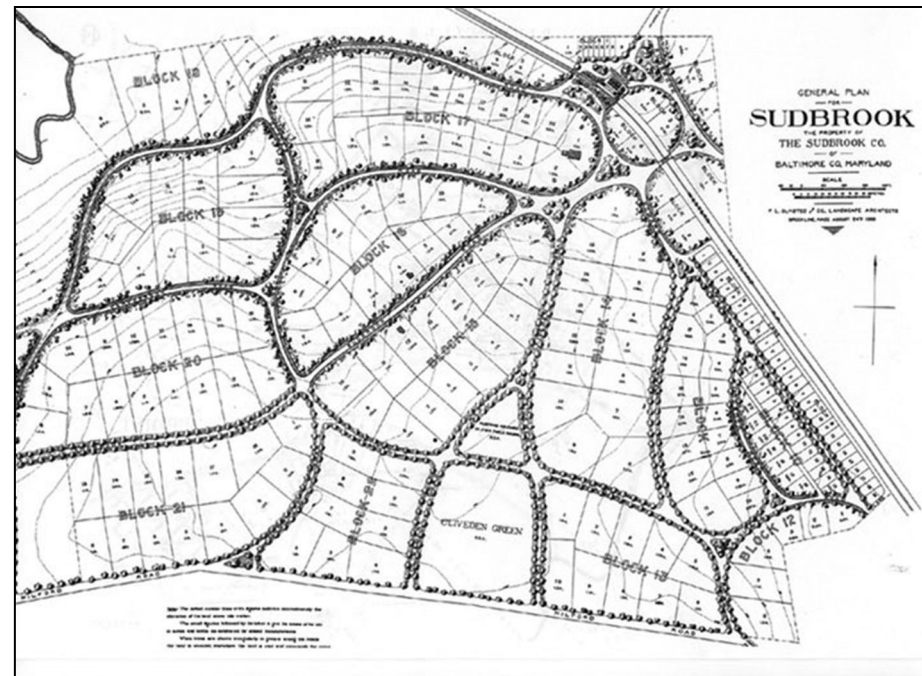
Olmsted Works in Maryland

The Friends of Maryland's Olmsted Parks & Landscapes (FMOPL) joins Olmsted 200, <https://olmsted200.org>, a nationwide celebration of the 200th anniversary of the birth on April 26, 1822, of landscape architect Frederick Law Olmsted (FLO) in Hartford, Connecticut. To support this effort, the FMOPL Archives Committee has compiled a Master List of the digital and archival records for projects throughout Maryland that involved the Olmsted firm—136 projects in all! Founded in 1986, FMOPL focused its early archival efforts on the extensive Olmsted-planned public grounds in Baltimore. By sharing extensive archival material to this digital Master List, FMOPL welcomes research on Maryland Olmsted Projects.

In addition to the many public parks, squares, scenic boulevards and parkways that the Olmsted firm designed, the archive includes numerous projects detailing private estates, residential developments, subdivisions, school campuses and regional planning efforts plus a sprinkling of public buildings, church grounds, cemeteries, residential institutions, commercial and industrial buildings around the state.

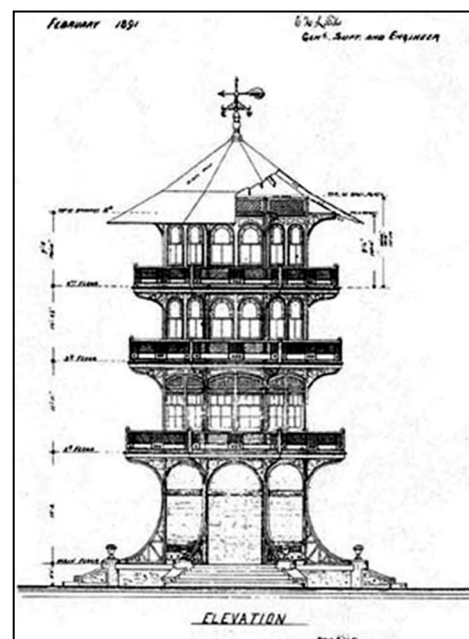


Compiled by the National Association for Olmsted Parks (NAOP), dots on this map show the locations of 136 Olmsted projects throughout Maryland. Find the United States map at <https://olmstedonline.org/Job/ExploreMap>



Courtesy of the NPS, Frederick Law Olmsted National Historic Site

*The Sudbrook Co.'s 1889 General Plan for the Sudbrook residential development in Baltimore Co., one of 17 residential communities designed by Frederick Law Olmsted. **Olmsted's Sudbrook: The Making of a Community**, 1997, by Melanie D. Anson details Sudbrook Park history.*



OLMSTED ARCHIVES RESOURCES

NPS Frederick Law Olmsted National Historic Site www.nps.gov/frla/olmstedarchives.htm

Library of Congress, Olmsted Papers and Records Collection www.loc.gov/collections/olmsted-associates-records

Olmsted Archives, Frederick Law Olmsted, NHS, NPS Flickr site: http://www.flickr.com/photos/olmsted_archives/albums

Maryland State Archives <http://speccol.msa.maryland.gov/pages/speccol/series.aspx?speccol=5339&series=55>

FMOPL www.olmstedmaryland.org

This 1891 drawing of Patterson Park Observatory by Charles Latrobe preserved in the FMOPL Archives.

FMOPL endeavors to make Olmsted project files in Maryland easily accessible for researchers and the curious public to explore and learn the extent of FLO and the subsequent Olmsted Brothers (six firm names over 7 decades) firm's influence and accomplishments in Maryland.

The Olmsted firm had projects in Baltimore City as well as eleven Maryland counties (Allegany, Anne Arundel, Baltimore, Cecil, Frederick, Howard, Montgomery, Prince George's, St. Mary's, Talbot and Worcester) seen in an online map compiled by the National Association of for Olmsted Parks <https://olmstedonline.org/Job/ExploreMap>

Find the expanding **Master List of Olmsted Maryland Projects** at www.olmstedmaryland.org. This list compiles online and hard copy records from local, state and national sources:

- ◆ The Library of Congress (LOC),
- ◆ Olmsted Archives Flickr site
- ◆ Olmsted Research Guide Online
- ◆ The Smithsonian's Archives of American Gardens Photograph Collections
- ◆ Maryland State and Baltimore City Archives
- ◆ Maryland Inventory of Historic Properties

See the online addresses in the Olmsted Archives Resources on the previous page and more on the FMOPL website.

Some projects have extensive documentation with drawings, photographs and correspondence. Other projects never materialized, having only the initial job inquiry and the firm's proposed fees in the records. To easily identify the amount of available documentation for a project, the **Master List of Olmsted Maryland Projects** totals the documents available in various archives resources.

The Olmsted Papers and Records Collection at the Library of Congress (LOC), Manuscript Division contains most of the firm's written correspondence and administrative files, now posted online.

The **Master List of Olmsted Maryland Projects** links to nearly 6,500 pieces of correspondence in the LOC collection, with some job files in the hundreds of pages: Guilford Park Co. (1,254), Roland Park Co. (317), Baltimore City Parks Municipal Art Society Report (572) and the Baltimore City Plan for Rehabilitation of Slum Areas (399).

Since 2012, the National Park Service (NPS) has been uploading images to Olmsted Archives, Frederick Law Olmsted, NHS, NPS Flickr site: http://www.flickr.com/photos/olmsted_archives/albums. The Flickr site includes digitized drawings and photographs sorted for viewing in albums by the Olmsted Job Number. Find topographic and site surveys, Olmsted design sketches, construction drawings and architect's renderings of proposed buildings on the ever-expanding Flickr site.

The **Master List of Olmsted Maryland Projects** links to nearly 6,700 drawings on the National Park Service's Flickr site with extensive job files: Maryland National Capital Park & Planning Commission's development of Rock Creek Park (2,246) and the Western Electric Co. Point Breeze Plant (255).

Prior to the Olmsted Archives Flickr site, reviewing these materials required a visit to the Frederick Law Olmsted National Historic Site, 99 Warren Street, Brookline, Massachusetts. This seven-acre complex from 1883, Fairsted, was the home and professional offices of Frederick Law Olmsted and landscape architecture firm until 1980. Overseen by the National

Park Service, staff at Fairsted continue to scan documents in the site's archives and upload them to Flickr. To fully appreciate the breadth of Olmsted work over a century, visit the extensively restored grounds and structures at Fairsted.

The **Master List of Olmsted Maryland Projects** also links to The Friends of Maryland's Olmsted Parks & Landscapes Collection (MSA SC 5339-55) at the Maryland State Archives (MSA). The core of the archival collection is 266 Olmsted-related historic drawings and blueprints (dated between 1880–1930) from the Baltimore City Department of Recreation and Parks.

In 1986, FMOPL volunteers began inventorying Olmsted Brothers Landscape Associates, Charles Latrobe and other significant drawings and site plans in files at Baltimore City Department of Recreation and Parks. FMOPL President, Marianne Kreitner secured the inventory with its move to the Evergreen House Museum, Johns Hopkins University, arranged by FMOPL Treasurer John Davis. FMOPL invested in archival storage materials and professional conservation of the collection. FMOPL volunteers Ed Shull and Judith Smith managed access to the collection at Evergreen and oversaw the extensive professional conservation of the collection.

During the 2000s, Maryland State Archivist Ed Papenfuse administered the earliest digitalization of drawings in the collection. Access the Maryland State Archives digital images: <http://speccol.msa.maryland.gov/pages/speccol/series.aspx?speccol=5339&series=55>

The inventory at Evergreen House included manila folders for each Baltimore public grounds project in the Library of Congress, Olmsted Associates Collection

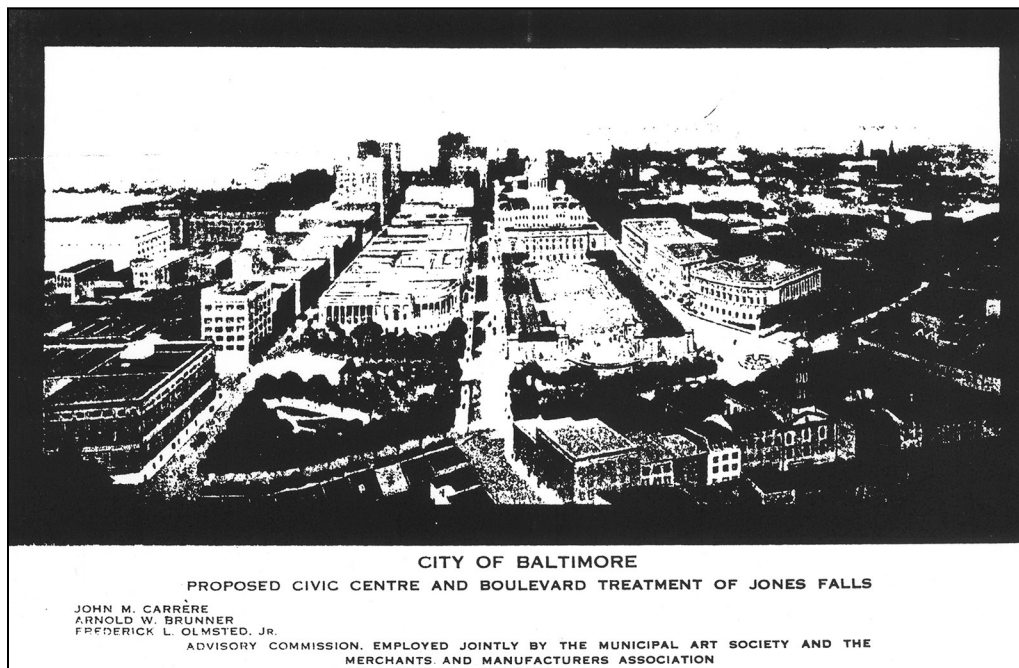
at the Madison Building, Washington, D.C. In the late 1980s, FMOPL volunteers, Mimi Cooper, Anneke Davis, Ellie Kelly and Sandy Sparks made day-long trips to photocopy each page, a dime at a time, of the extensive correspondence and office records relating to Baltimore public grounds. The LOC was filming Olmsted Associates records to microfiche.

In 2014, FMOPL President Ed Orser negotiated moving the FMOPL Olmsted Collection from Evergreen House to the newly-established Baltimore City Archives at 2615 Matthews Street, in agreement with City Archivist Rob Schoeberlein and the Baltimore City Department of Recreation and Parks. Ongoing work on the **Master List of Olmsted Maryland Projects** distinguishes if there are digital files or only hard copies available in the FMOPL Collection for specific projects. For access to the Collection in person, go to www.msa.maryland.gov.bca or call 410-396-3884.

The FMOPL Archives Committee strongly encourages research by a broad base of academic, professional and community interests. In addition, work on developing the **Master List of Olmsted Maryland Projects** identified programming in coordination with the Baltimore Architecture Foundation and Baltimore Heritage Inc., for Virtual History lunchtime presentations. View past Olmsted-related presentations on www.olmstedmaryland.org.

For ongoing research and programming, please contact FMOPLorg@gmail.com.
—Jillian Storms, ALA, architect, Baltimore Architecture Foundation, Dead Architects Society and FMOPL Board Member and Sandy Sparks, FMOPL Founding President

Special Thanks to Judy Dobbs for her dedication to documenting four decades of FMOPL publications and organizational records.

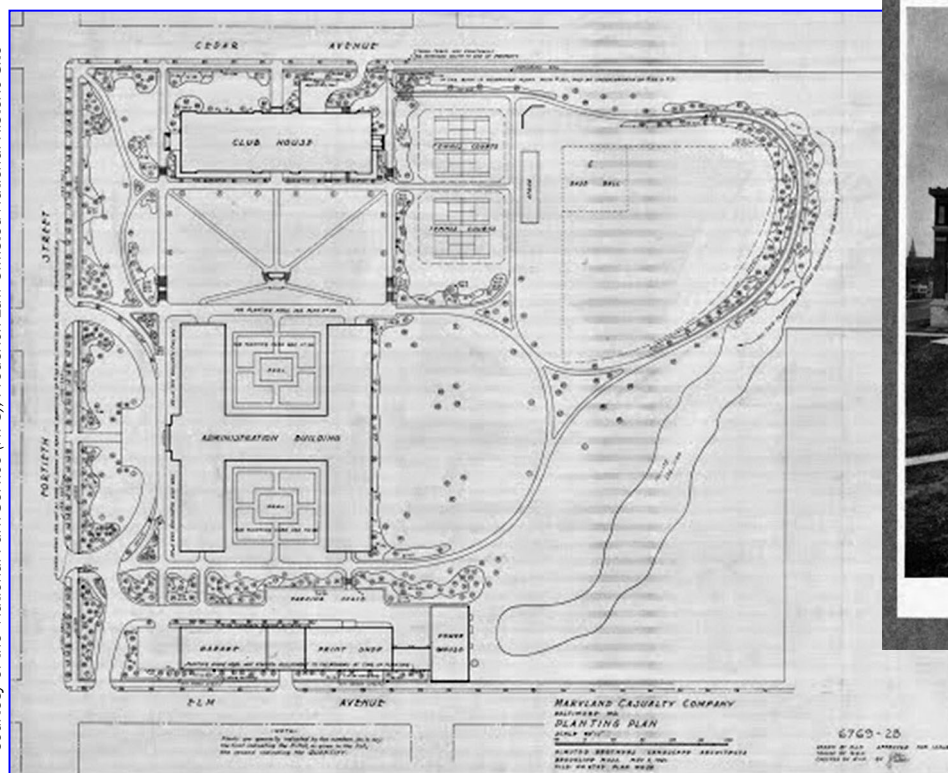


The plan for grouping future public buildings in Baltimore's civic center, devised by Carrère, Brunner and Olmsted Jr. in 1909 was photocopied in the Manuscript Division, LOC by FMOPL volunteers in the late 1980s.



Fenwick Island, Olmsted Bros. aerial view in 1941 (top left) and today (right).
Ocean City, Olmsted Bros. aerial view in 1941 (bottom left) and today (right).

Courtesy of the NPS, Frederick Law Olmsted National Historic Site



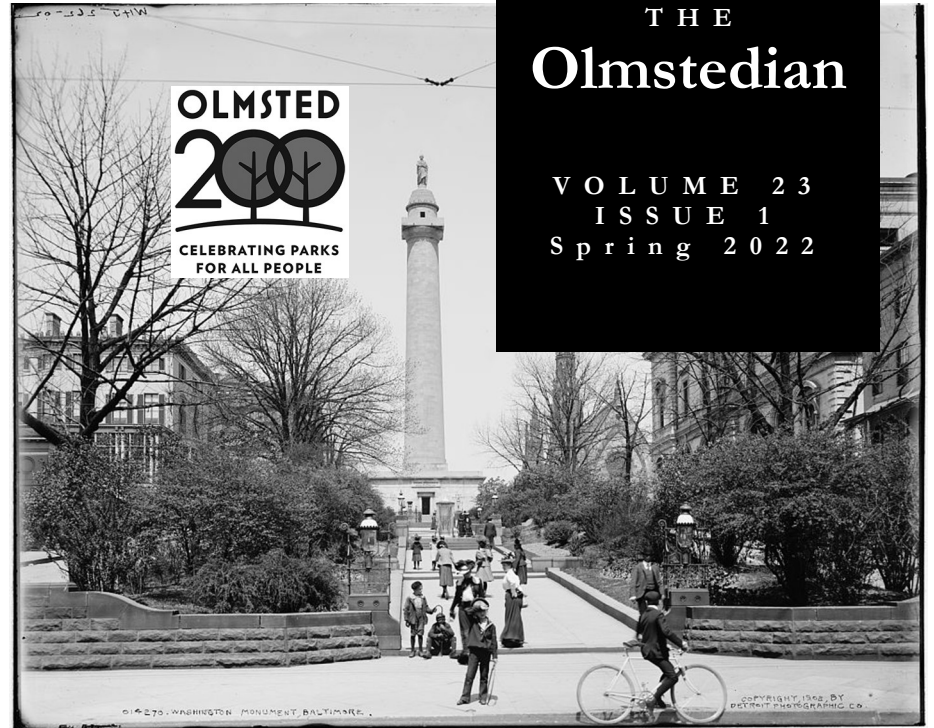
This 1921 Olmsted Planting Plan for the Maryland Casualty Company on W. 40th Street, Baltimore, and 1922 photo of the garden feature installed on east side of the property, now The Rotunda multi-use community.

Publication Design/Editing: Sandra Sparks & Judy Dobbs

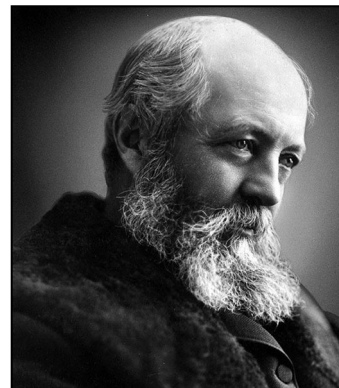
Courtesy of the National Park Service (NPS), Frederick Law Olmsted National Historic Site

THE Olmstedian

VOLUME 23
ISSUE 1
Spring 2022



In 1875, Frederick Law Olmsted designed Mount Vernon Square's north and south parks (1908 photo). Olmsted Jr. collaborated with Carrère on the extensive redesign (1917) that remains today.



Frederick Law Olmsted (1822-1903)



John Charles Olmsted (1852-1920)



Frederick Law Olmsted Jr. (1870-1957)

Maryland's Olmsted Archives

Researching Local, State & National Resources
Master List of Olmsted Maryland Projects, www.olmstedmaryland.org

FRIENDS OF MARYLAND'S OLMSTED PARKS & LANDSCAPES MEMBERSHIP FORM

Name _____
Address _____
City _____ State _____ Zip _____
Phone (H) _____ (W) _____
E-Mail _____

www.olmstedmaryland.org

P.O. Box 16244, Baltimore, MD 21210-0244

F.L. Olmsted

Friends of Maryland's Olmsted
Parks & Landscapes, Inc.

YES, I want to join and
contribute to the Friends of
Maryland's Olmsted Parks &
Landscapes, Inc. (FMOPL),
a 501(c)(3) non-profit organi-
zation. All contributions are
tax-deductible.

- ☐ Individual/Family: \$25
☐ Student: \$15
☐ Institution/Corporate: \$50
☐ Supporting Member: \$75
☐ Sustaining Member: \$100
Mail to: FMOPL, P.O. Box
16244, Baltimore, MD 21210

ORDER FMOPL BOOKS ONLINE

Go to: olmstedmaryland.org
for the complete list of
FMOPL publications.
Available to buy.
Prices include Maryland
State Sales Tax & Mailing/
Handling Costs.